

**BEACH HOUSE
LIVING**

studio

INTERIOR DESIGN | est 1998

Design Concept

Interior Team: Tehila van Schalkwyk & Vanessa Theron



Base Colour Palette

For your home's base colour palette, we have opted for light and warm NEUTRALS with accessories with touches of Black or Brass. We'd also like to suggest White stone tops in your Kitchen and on your Main Bathroom Vanity.

WALLS

Either PLASCON Plaster (Light grey/stone neutral) or
PAINTSMITHS Sea Mist (Neutral Off White)

CUPBOARDS & CABINETS

PLASCON Evasive White (Light Stone)

FLOORS

Natural Oak Vinyl Flooring



Design Concept

Outside Entrance

We'd love to suggest a new MODERN front gate and house number. A slatted wooden front gate will warm up the all-white exterior of the house and add a modern flair. You can have the slats quite close together for privacy.

By doing loose paving stones on the walkway it leads your eye towards the front door and it breaks up the long expanse. You can either do grass between the paving stones or pebbles for a bit of visual contrast.



Outside Entrance

We'd love to suggest painting the left wall an ACCENT colour, perhaps a dark charcoal to make greenery POP. The idea is to do greenery all along the left wall, with either tall shrubs, assorted leafy plants, or you could even mount wires on the wall with creeping vines and plants.



Design Concept

Entryway

We've created a bit of a niche in the entryway that we think could be perfect for a built-in bench with hooks above it. We love the idea of a wooden bench, as well as a floating shelf above, and wooden paneling detail adds interest.



Entryway Inspiration



Be sure to add some Cushions for softness and style. On the wall on the right, you could either do beautiful statement Art or even a Gallery Wall with Photos. Hertex has a lot of large Canvas Artworks that fit in well with a Contemporary home.

Design Concept

Kitchen, Dining and Living Room



Design Concept

Kitchen

We've taken inspiration from Studio McGee's signature style for your Kitchen and worked with classic shaker style cupboards in a light neutral beige colour with white stone tops. Together with elegant brass handles and gorgeous pendants above a large island this kitchen will become the heart of the home. The unit behind the island can act as the focal point in the Kitchen, by housing the stove. We'd also love to suggest you do Splashback tiles (perhaps a white subway tile) on the 'focal' wall, and to continue the stone of your tops around 10cm high on all the walls as a splashback.



Design Concept

Kitchen

You can have your Kitchen Island the same colour as the rest of your Cabinets, or you can pop with an ACCENT Colour, either a darker paint colour, or even in a beautiful wood.

Inside the taller Cupboard next to your fridge you could house a coffee station and all your countertop appliances for a tidy looking kitchen.

These images are just a starting point and together with your Kitchen Company, the kitchen design and layout can be finalised.



Kitchen



Open Plan Living



Design Concept

Dining Room



We'd love to suggest a round Dining Table in your open living space. With double doors opening up to the Patio, this space can feel casual and elegant at the same time. By placing a server on the wall in the dining space, you break up the long wall in the living space, and you have space to serve food, store drinks and tableware. It is always also a golden opportunity to do a beautifully styled 'moment' as we like to call it.

Dining Room



Page 13/51



Design Concept

Kitchen & Dining Room

You'll see we that we've put your Wedding Photo's on the wall beside the Kitchen, and we'd love to take inspiration from the colours in these photos for the Cushions and accessories in your lounge. By working with subtle greens, gold, camels and stone colours, with POPS of Black.



Dining Room



Design Concept

Living Room

The Studio McGee look works a lot with a symmetrical layout in the living room, and they often have bookshelves on either side of the fireplace. Instead of doing built in bookshelves, you can do freestanding bookshelves, styled beautifully with books, ornaments, photo's, art and plants.

By mounting the TV on the wall above the fireplace you also balance out the room beautifully.



Living Room

You can re-upholster your Armchairs that are currently in your living room, but often you can also easily find stunning NEW accent chairs that cost about the same as re-upholstery and it could also update the space. A set of round nesting coffee tables suit the layout of the room with your corner sofa best. Together with a large area rug, and Art the room is complete. Your Seagrass Rug is absolutely suited to the space, but you could also go for a different light neutral rug.



Design Concept

Livingroom Moodboard



Design Concept

Braai Room

We've used the Wooden Vinyl Flooring throughout your home, except in your Braai Room where we've worked with large Cement Tiles in a neutral dark grey. A screeded and polished cement floor will also work very well here. It creates a bit of contrast in your home, and also makes this space feel more casual and laid back. You can put a large Window in the alcove leading to the Braai room, and by doing a little bench with storage beneath it, you create a casual seating area, where you can hang out with friends when you're braaing or cuddle up and enjoy the afternoon sun.



Design Concept

Braai Room



Braai Room



Design Concept

Braai Room

You can update your Braai by building it in a straight line and painting it an ACCENT charcoal colour. By putting doors on the openings under the Braai the space is instantly tidier. We'd love to suggest doing these cabinets in a neutral gray colour, or you can even also do it in the same charcoal as the Braai. You can do floating shelves on either side of the braai or even art.





Design Concept

Braai Room

We've turned your Dining Table to suit the orientation and layout of your space better. We've also taken out the closet in the Hallway and created open shelving instead. Wooden Shelves pop against a dark charcoal backing.

A server in your Dining area is also always a practical choice. You can do art above it to bring some colour and pattern into this room. A floor plant and floor lamp, together with a beautiful pendant light completes the furnishings.

Braai Room



Study

We've turned the room adjacent to your Braai Room into a study that doubles as a Guest Room through clever use of furniture and layout. We've turned your single bed into a Daybed that can be made up for Guests at night, but during the day it acts like a comfy sofa. Add some floating shelves on the wall by your desk, and large oversized art on your walls for decor, and the room is instantly transformed. You can even fit a small wardrobe in the room to store bedding and other essentials. A fabric Roman Blind can really compliment this space, by bringing in softness.



Study



Study



Study



Hallway

At the end of the hallway towards your Bedrooms we'd like to suggest painting the Wall an ACCENT colour, and because we're not bound by any other design elements we can go really bold here. Since we've got quite a big wall this would be the ideal space for a collection of items, whether it be a Gallery Wall with photo's or Art. Or you can get quite creative by hanging a collection of Baskets, or even a collection of beautiful PLATES.



Design Concept

Main Bedroom

We have extended the opening between the Dressing Room and Bedroom to create a more open flow. You will see that we also moved the Bathroom opening to the centre of the wall and added a Barn Door, that will both offer privacy for the Bathroom when needed, as well as add a stunning design element to the room. You can also absolutely do double doors that open up to the Garden. We've worked on a new King sized bed in your room, and you'll see that it fits quite comfortably, once the Bathroom Door has been moved. We'd love to suggest doing a Upholstered Headboard to add softness and comfort to your space. By adding stunning Wall lights next to the Bed, it will just open up space on your Bedside Tables.





Design Concept

Main Bedroom

For your Dressing Room we'd also like to suggest keeping the carcasses and changing the doors to update the cupboards. By doing the same cupboard style throughout your home there is continuity. You can either do black or brass hardware. We'd definitely suggest taking the cupboards up all the way to the ceiling and finishing the top with molding detail.



Y4E2-3

Evasive White

Main Bedroom



Main Bedroom



Main Bedroom

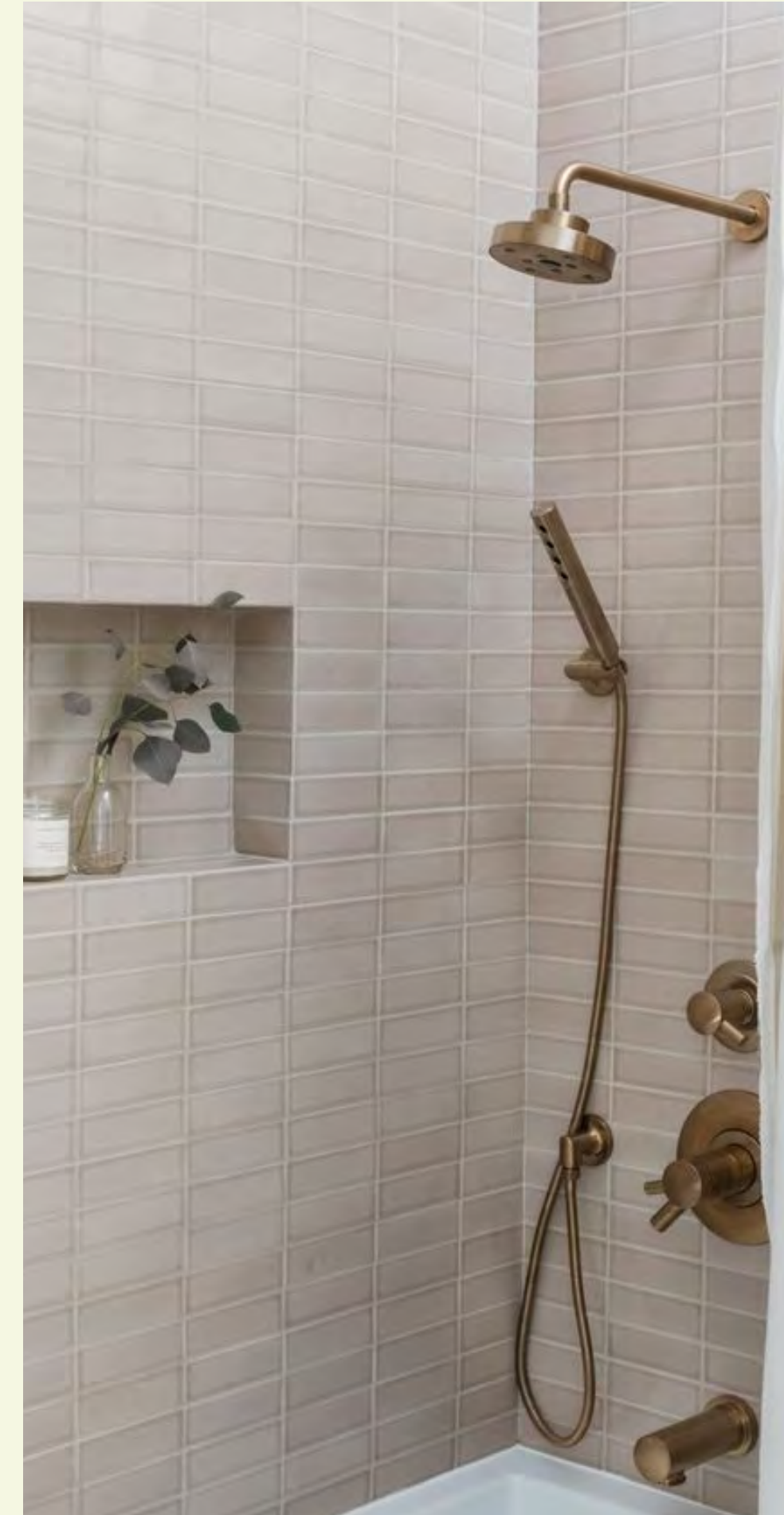


Design Concept

Main En-Suite Bathroom

In the shower you can build in a small shelf into the wall for your toiletries, which is both practical and keeps your shower looking tidy.

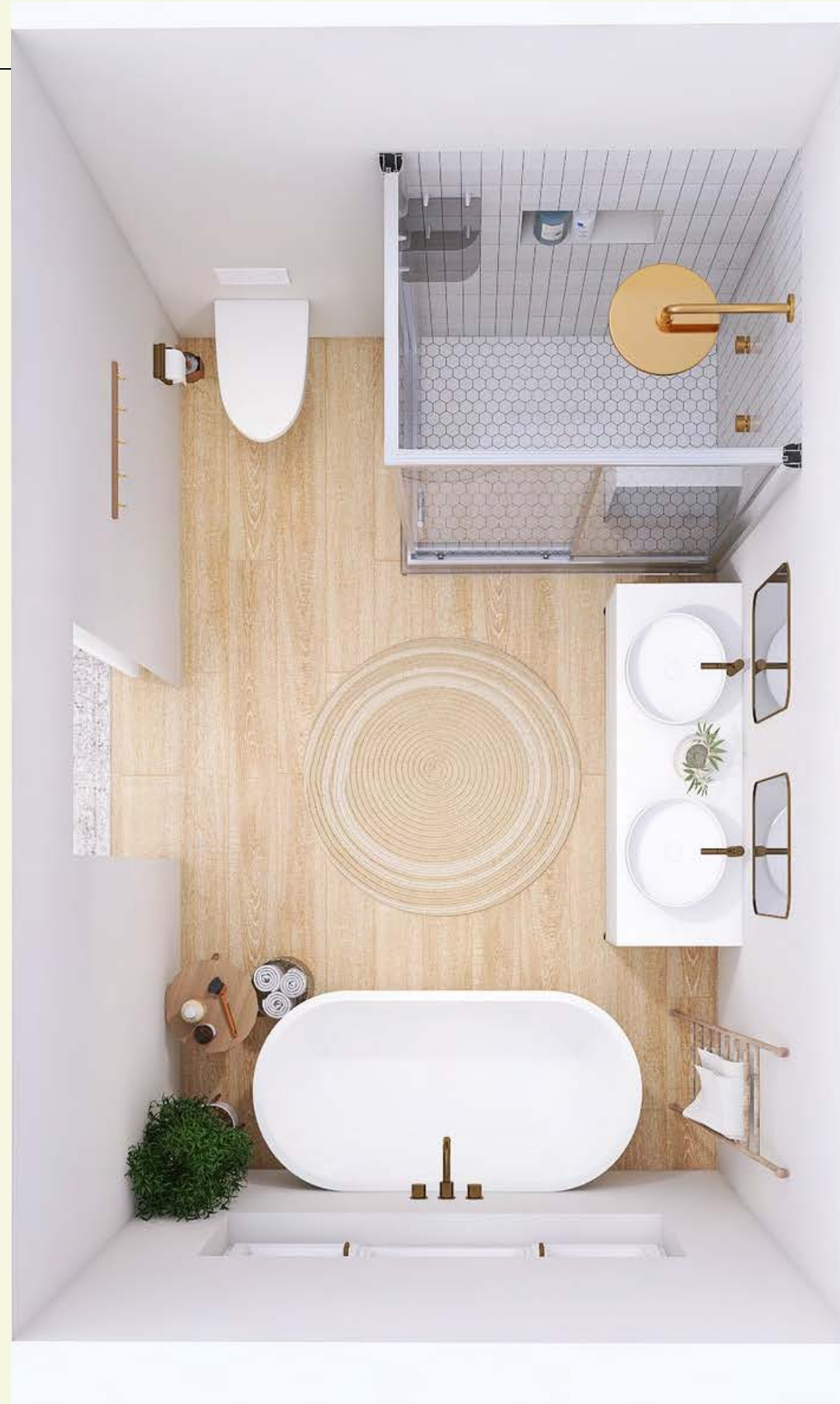
For tiles you can use neutral colors and get creative with the tile layout, such as vertical tiles, or even herringbone. We'd love to suggest looking at ceramic tiles that look glazed and hand made, it just adds a beautiful detail.



Design Concept

Main En-Suite Bathroom

We've changed up the layout in your Bathroom to maximize the space. By bringing in a free standing bathtub you instantly update and modernize the space. By doing glass panels on the shower you can make the shower bigger, and make the bathroom feel lighter. You'll also see that we moved the toilet so that you can have a double Vanity. By adding details such as a wooden ladder for towels, an area rug, a rattan pendant light, and a rustic side table next to the Bathtub this Bathroom is infused with style and personality.



Main En-Suite



Main En-Suite



Design Concept

Main En-Suite Bathroom

We wanted to keep with the neutral colour palette of your home, and because this is the Main En-Suite we thought to add a touch of elegance and luxury. That is why we would love to suggest looking at Brass and Gold Hardware & Accessories. You can also mix metals, for example if you wanted to use silver taps, you could still do Brass Cabinet Handles, Mirrors and Accessories. By doing closed cabinets for your Vanities you'll gain a lot of storage and maximize the use of your space. We feel white stone tops for your Vanities just make sense with the whole aesthetic.



Main En-Suite



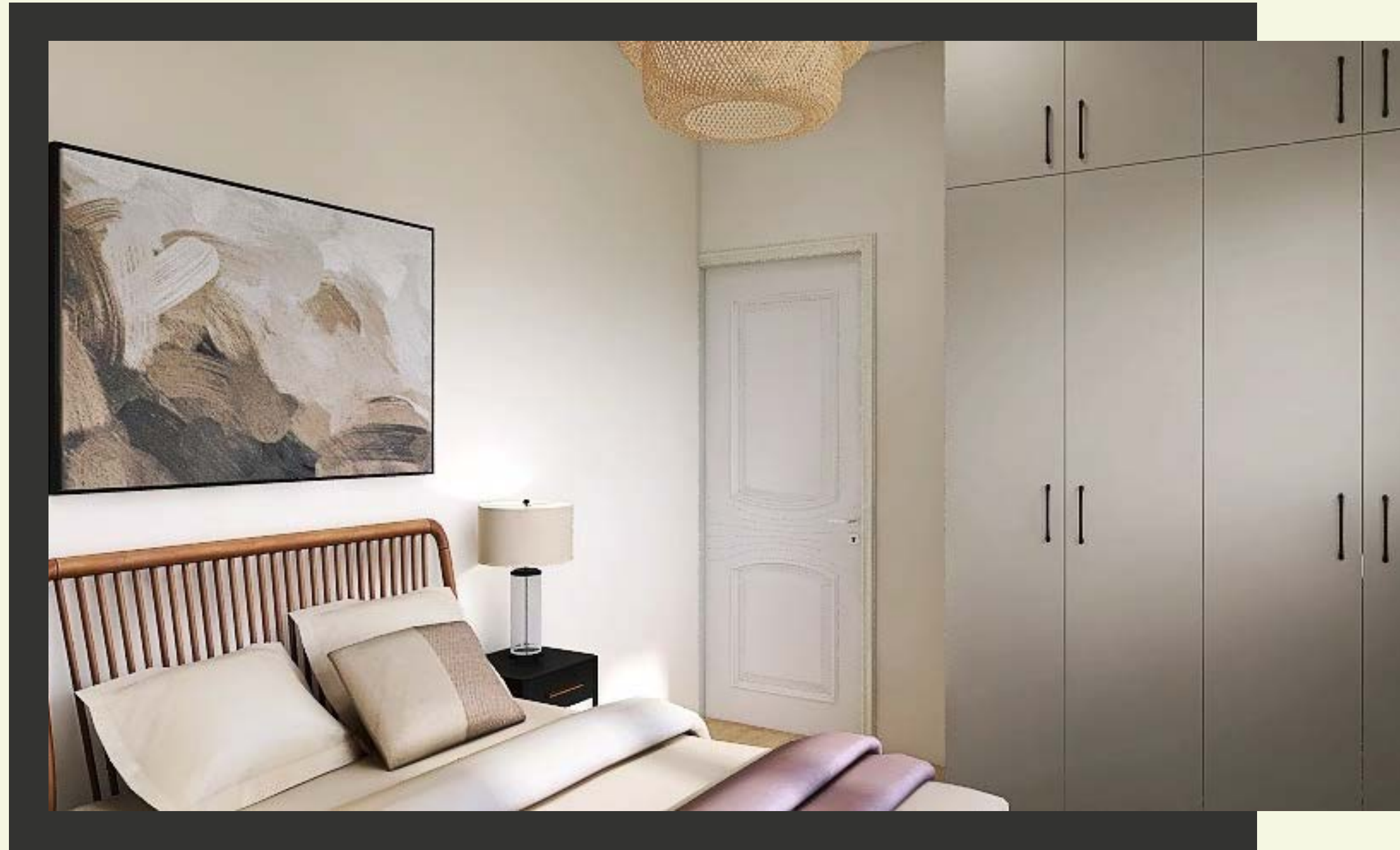
Main En-Suite



Guest Bedroom

You can move your existing Double Bed into the Guest Bedroom, as well as the chest of drawers that is currently in your Main Bedroom. We'd love to suggest bringing in a Headboard, Superbalist often has affordable and beautiful Headboards. I was thinking a Cane Headboard would look stunning. In this room you could play with Wood, Cane, Beige, Taupe and Black Accents.

By updating your Wardrobes the whole room will also instantly be lifted. The Cupboard carcasses can be re-used and the doors can be updated. We'd love to suggest doing shaker style doors, and painting the wardrobes a neutral stone/taupe colour, and doing new cupboard handles.



Guest Bedroom Mood Board



62

Plaster

Y4E23

Evasive White



Guest Bedroom



Guest Bedroom



Guest Bedroom



Guest Bedroom



Guest Bathroom



First of all, we'd like to suggest taking out the Wall for the shower, and putting in glass shower panels. We'd like to suggest Concrete Screeded Floors, even in the shower, to give the space an organic and minimalist feel. You can finish your screeded floors with a grainy nonslip texture. Bring pattern and interest into this small bathroom by tiling only the shower walls in a beautiful tile. Subway tiles are very contemporary right now, and you can lay it out in an unusual way, such as vertically or even in a herringbone pattern. You can also get beautiful handmade ceramic tiles in neutral colours at our local Hardware Shops. A floating Sink will save space and update the space, and we thought do suggest lovely floating shelves above the toilet to bring in a bit of a wooden element. With your high ceiling you can also do a stunning pendant light, perhaps a Rattan Pendant, BLACK or even Brassware could also add a touch of detail to this small minimalist bathroom.

Guest Bathroom Mood Board



Design Concept

Outdoor Shower

We'd love to suggest you enclose your Outdoor Shower in WOOD, to keep it cool and beachy. You could do it on the wall between your Main En-Suite Bathroom Window and your parents office window. We'd also love to suggest you surround the wooden enclosure with lots of greenery!



Design Concept



Contact

c: +27 (0) 76 653 1807 | c: +27 (0) 82 303 0286
e: vanessa@livingstudio.co.za | tehila@livingstudio.co.za
Cnr of Broad & High Street, Hermanus, 7200, South
Africa PO Box 1813, Hermanus, 7200, South Africa
V AND CO PTY Ltd T/A Beach House Living Studio
www.livingstudio.co.za